

Clotilde opéra Acte II

Sur la route de Soissons

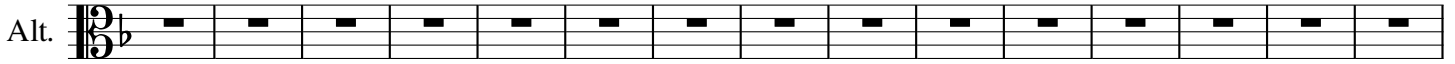
Yves-Marie Adeline

♩ = 54



20

♩ = 120



35



37



39



41



43



45



47



49



51

Alt.

56

Alt.

58

Alt.

60

Alt.

62

Alt.

64

Alt.

66

Alt.

68

Alt.

70

♩ = 66
(Convoi de Clotilde et ses suivantes)

Alt.

81

♩ = 54
Acte II Scène 2: Clotilde, Clovis, chœur des guerriers et suivantes

Alt.

93

Alt.

187

Alt. Musical staff for measure 187, starting with a treble clef, a key signature of one sharp (F#), and a 3/8 time signature. The staff contains a sequence of eighth and quarter notes.

194

Alt. Musical staff for measure 194, starting with a treble clef, a key signature of one sharp (F#), and a 3/8 time signature. The staff contains a sequence of eighth and quarter notes, including a whole rest.

203

Alt. Musical staff for measure 203, starting with a treble clef, a key signature of one sharp (F#), and a 3/8 time signature. The staff contains a sequence of eighth and quarter notes.

$\text{♩} = 90$

$\text{♩} = 120$

210

Alt. Musical staff for measure 210, starting with a treble clef, a key signature of one sharp (F#), and a 3/8 time signature. The staff contains a sequence of eighth and quarter notes, followed by a common time signature (C) and a key signature change to two flats (Bb, Eb).

225

Alt. Musical staff for measure 225, starting with a treble clef, a key signature of two flats (Bb, Eb), and a 3/8 time signature. The staff contains a sequence of eighth and quarter notes.

237

Alt. Musical staff for measure 237, starting with a treble clef, a key signature of two flats (Bb, Eb), and a 3/8 time signature. The staff contains a sequence of eighth and quarter notes.

246

Alt. Musical staff for measure 246, starting with a treble clef, a key signature of two flats (Bb, Eb), and a 3/8 time signature. The staff contains a sequence of eighth and quarter notes.

251

Alt. Musical staff for measure 251, starting with a treble clef, a key signature of two flats (Bb, Eb), and a 3/8 time signature. The staff contains a sequence of eighth and quarter notes.

261

Alt. Musical staff for measure 261, starting with a treble clef, a key signature of two flats (Bb, Eb), and a 3/8 time signature. The staff contains a sequence of eighth and quarter notes.

272

Alt. Musical staff for measure 272, starting with a treble clef, a key signature of two flats (Bb, Eb), and a 3/8 time signature. The staff contains a sequence of eighth and quarter notes.

281

Alt. Musical staff for measure 281, starting with a treble clef, a key signature of two flats (Bb, Eb), and a 3/8 time signature. The staff contains a sequence of eighth and quarter notes, ending with a whole note.

371

Alt. 

372

Alt. 

373

Alt. 

374

Alt. 

375

Alt. 

376

Alt. 

377

Alt. 

♩ = 56

385

Alt. 

394

Acte II Scène 4 : Clotilde, guerriers de Clov

Alt. 

♩ = 120


406

Alt. 

419

Alt. 

425

Alt. 

432


Alt. 

$\text{♩} = 63$

438

Alt. 

445

Alt. 

452

Alt. 

455

Alt. 

457

Alt. 

460

Alt. 

462

Alt. 

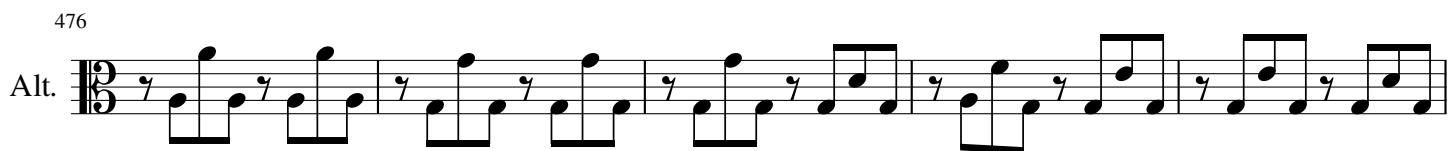
465

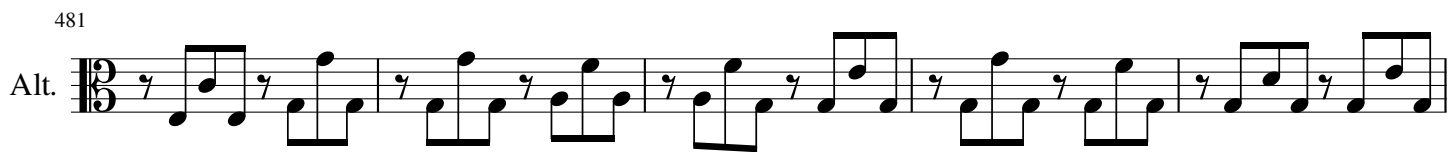
Alt. 

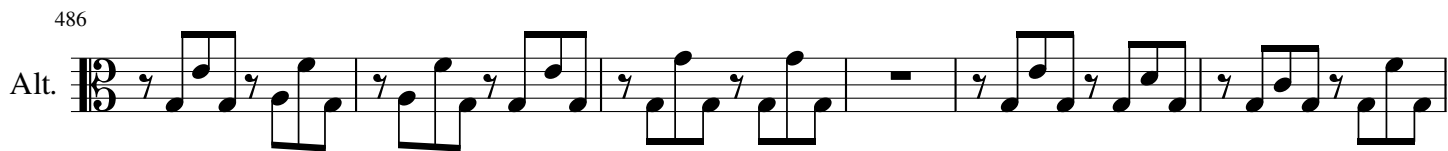
468

Alt. 

470
Alt. 

476
Alt. 

481
Alt. 

486
Alt. 

492
Alt. 